

TYPE FT-1 FLEXITEST SWITCH - OUTLINE DRAWING & DRILLING PLAN

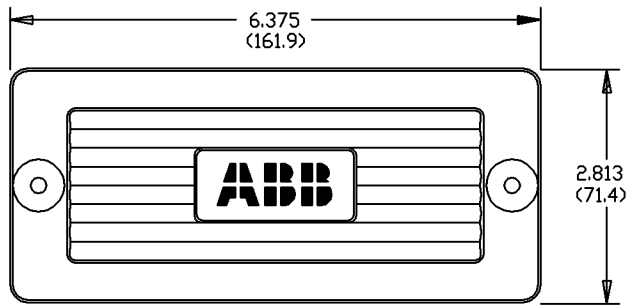


FIG.1 FT-1 WITH BLACK COVER

OUTLINE

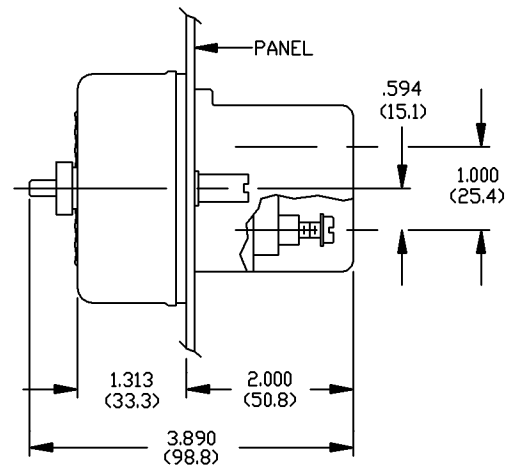
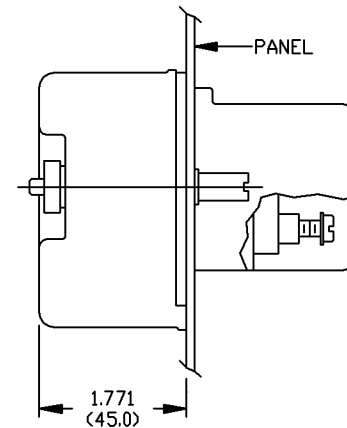
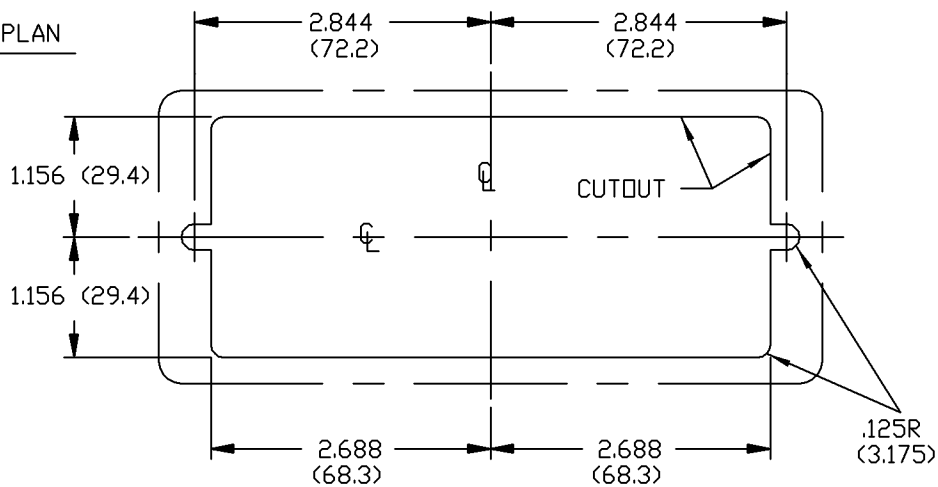


FIG.2 FT-1 WITH CLEAR COVER

(OTHERWISE SAME AS FIG.1)



DRILLING PLAN



DIMENSIONS: INCHES (mm)

8

ECO EM2007-1077

The information contained in this document has to be kept strictly confidential. Any unauthorized use, reproduction, distribution or disclosure to third parties is strictly forbidden.
ABB reserves all rights regarding Intellectual Property Rights.

SOFTWARE TYPE:
AUTOCAD 2006

ENG. REF:
1616C24

ABB Protective Relays and Switches, Coral Springs FL, U.S.A.

DFTR/DATE: M. Uriguen 09/14/07

CHKR/DATE: M. Uriguen 09/14/07

APPR/DATE: T. Masters 09/14/07

TITLE:
**OUTLINE & DRILL DRAWING
FT-1 SWITCH**



© Copyright 1990 ABB
All rights reserved

SIZE
A

DWG. NO:
129A500

REV:
8

SCALE:
NONE

SHEET 1 OF 2

TYPE FT-1X EXTENDED FLEXITEST SWITCH - OUTLINE DRAWING & DRILLING PLAN

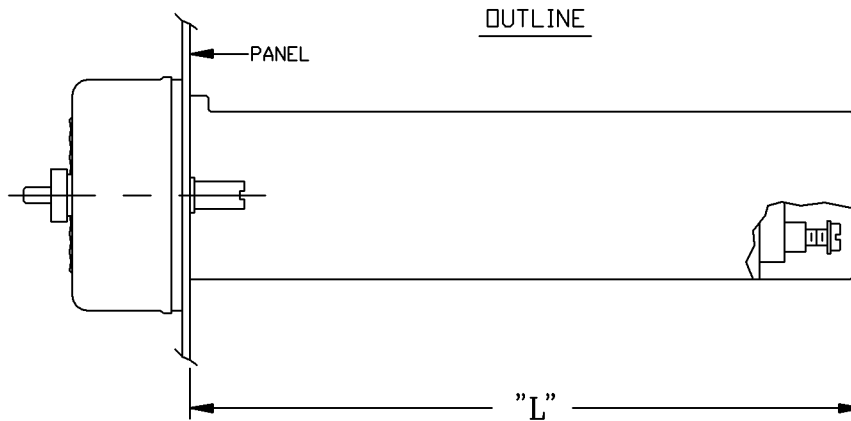


FIG.3 FT-1X WITH BLACK COVER (OTHERWISE SAME AS FIG.1)

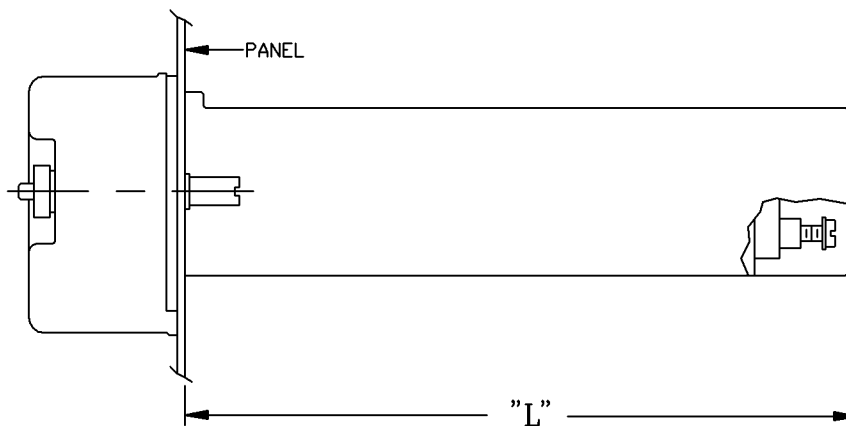



FIG.4 FT-1X WITH CLEAR COVER (OTHERWISE SAME AS FIG.2)

DRILLING PLAN

SAME AS FT-1 (SEE SHT.1 OF THIS DWG)

DIMENSIONS: INCHES (mm)

DIM. L	STYLE REF.
8.0 (203)	...X08
10.0 (254)	...X10
12.0 (305)	...X12

ECO EM2007-1077	8	The information contained in this document has to be kept strictly confidential. Any unauthorized use, reproduction, distribution or disclosure to third parties is strictly forbidden. ABB reserves all rights regarding Intellectual Property Rights. SOFTWARE TYPE: AUTOCAD 2006	DFTR/DATE: M. Uriguen 09/14/07	
			CHKR/DATE: M. Uriguen 09/14/07	
			APPR/DATE: Tim Masters 09/14/07	
			TITLE: OUTLINE & DRILL DRAWING FT-1 SWITCH	SIZE: A DWG. NO.: 129A500 SCALE: NONE
		ENG. REF.: 1616C24 ABB Protective Relays and Switches, Coral Springs FL, U.S.A.	© Copyright 1990 ABB All rights reserved	