

# TYPE FT-14 FLEXITEST SWITCH, SWITCH ARRANGEMENT & INTERNAL SCHEMATIC

REF.  
14 POS SW.  
UPPER SECTION  
FRONT VIEW  
(CVR REMOVED)

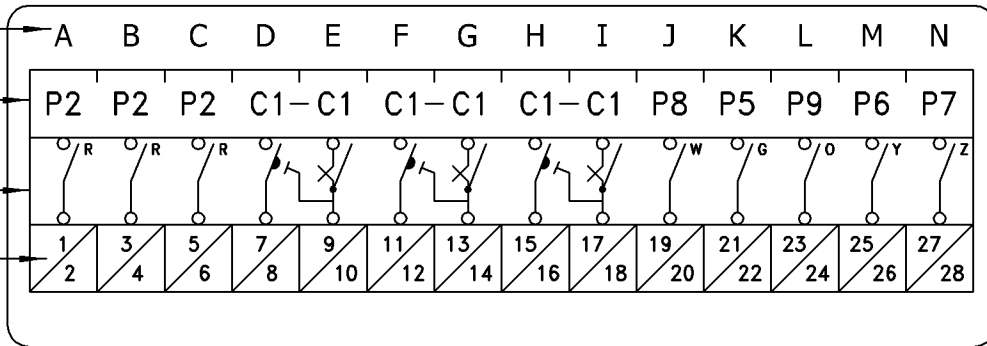


**STYLE No:**  
**FT4A14T08CN4031**

**CODE No:** 4031

**CLASS 1E:** NO

POLE  
POSITIONS  
SWITCH  
ARRANGEMENT  
INTERNAL  
SCHEMATIC  
TERMINAL NO.s  
(REAR OF SW)



No. POLES: 14

No. POTEN's: 8

No. CURR's: 6

TIE BARS: NONE

DRILL PLAN: 9666A30

INT SCH: 94A4031

**ARRANGEMENT: T T T C-C C-C C-C W G O Y Z**

Table 1 - Description of Poles for FT Flexitest Switches

Pole Type	Pole Designation	Handle Color	Description & Schematic Symbol
Potential	P1	P	Black <sup>†</sup> Potential, non-shorting blade.
Current	C1	C	Black <sup>†</sup> Current, non-shorting, with test jack and blade.
Current †† Shorting	C1-C1	C-C	Current shorting (make-before-break), with test jack and blade.
	C1-A1	C-A	Current shorting (make-before-break), with blade only.
	C1-B0	C-B	Current shorting (make-before-break), with stud only.
	C1-D0	C-D	Current shorting (make-before-break), with test jack only.
	C1-E1	C-E	Current shorting (make-before-break), with shorting blade only.
	C1-S0	C-S	Current shorting (make-before-break), with fixed shorting strap.
Other	D0	D	None Current test jack, no blade.
	S0	S	None Fixed shorting strap.
	X0	X	None Empty pole position.

Table 2 – Handle Colors

Pole Type	Pole Designation	Handle Color	
Potential	P1	P	Black
	P2	T	Red
	P3	H	Brown
	P4	V	Purple
	P5	G	Green
	P6	Y	Yellow
	P7	Z	Blue
	P8	W	White
	P9	O	Orange
Current	C1	C	Black
	C2	R	Red
	C3	3	Brown
	C4	4	Purple
	C5	5	Green
	C6	6	Yellow
	C7	7	Blue
	C8	8	White
	C9	9	Orange

**TEST PLUGS:**

**INDIVIDUAL CURRENT CIRCUIT TEST PLUG.**  
STYLE No: 7B4618G04

**SEPARATE SOURCE TEST PLUG (14 POS).**  
STYLE No: 1355D32G04

**IN-SERVICE SERIES TEST PLUG.**  
STYLE No: NONE

† = See Table 2 for complete list of color handles.

†† = Current shorting poles can span up to 5 positions, and can have any combination of color handles (ex: C1-C7-C5-C2-A4).

ECO EM2007-1099 2

The information contained in this document has to be kept strictly confidential. Any unauthorized use, reproduction, distribution or disclosure to third parties is strictly forbidden.  
ABB reserves all rights regarding Intellectual Property Rights.

DFTRDATE: M.Uriguen 4/3/2008  
CHKRDATE: M.Uriguen 4/3/2008  
APPRDATE: Tim Masters 4/3/2008



SOFTWARE TYPE:  
AUTOCAD 2006

TITLE:  
**FT-14 SWITCH  
POLE ARRANGEMENT & INT SCH**

ENG. REF: MFG DWG: FT14-4031  
GEN DWG: 1619C94

© Copyright 2008 ABB  
All rights reserved

SIZE: **A** DWG. NO: **94A4031** REV: **2**

ABB Protective Relays and Switches, Coral Springs FL, U.S.A.

SCALE: NONE SHEET 1 OF 1