

TYPE FT-14 FLEXITEST SWITCH, SWITCH ARRANGEMENT & INTERNAL SCHEMATIC

REF.
14 POS SW.
UPPER SECTION
FRONT VIEW
(CVR REMOVED)

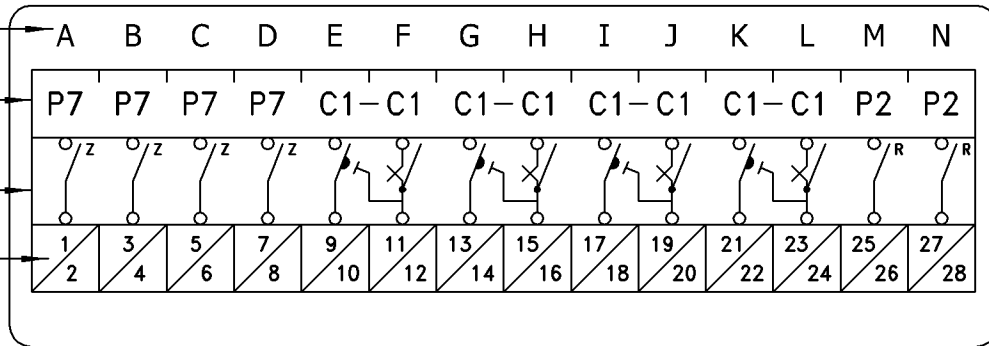


STYLE No:
FT4A14T06CN4074

CODE No: 4074

CLASS 1E: NO

POLE
POSITIONS
SWITCH
ARRANGEMENT
INTERNAL
SCHEMATIC
TERMINAL NO.s
(REAR OF SW)



No. POLES: 14

No. POTEN's: 6

No. CURR's: 8

TIE BARS: NONE

DRILL PLAN: 9666A30

INT SCH: 94A4074

ARRANGEMENT: Z Z Z Z C-C C-C C-C C-C T T

Table 1 - Description of Poles for FT Flexitest Switches

Pole Type	Pole Designation	Handle Color	Description & Schematic Symbol
Potential	P1	P	Black [†] Potential, non-shorting blade.
Current	C1	C	Black [†] Current, non-shorting, with test jack and blade.
Current †† Shorting	C1-C1	C-C	Current shorting (make-before-break), with test jack and blade.
	C1-A1	C-A	Current shorting (make-before-break), with blade only.
	C1-B0	C-B	Current shorting (make-before-break), with stud only.
	C1-D0	C-D	Current shorting (make-before-break), with test jack only.
	C1-E1	C-E	Current shorting (make-before-break), with shorting blade only.
	C1-S0	C-S	Current shorting (make-before-break), with fixed shorting strap.
Other	D0	D	None Current test jack, no blade.
	S0	S	None Fixed shorting strap.
	X0	X	None Empty pole position.

Table 2 - Handle Colors

Pole Type	Pole Designation	Handle Color
Potential	P1	P
	P2	T
	P3	H
	P4	V
	P5	G
	P6	Y
	P7	Z
	P8	W
	P9	O
Current	C1	C
	C2	R
	C3	3
	C4	4
	C5	5
	C6	6
	C7	7
	C8	8
	C9	9

TEST PLUGS:

INDIVIDUAL CURRENT CIRCUIT TEST PLUG.
STYLE No: 7B4618G04

SEPARATE SOURCE TEST PLUG (14 POS).
STYLE No: 1355D32G04

IN-SERVICE SERIES TEST PLUG.
STYLE No: NONE

† = See Table 2 for complete list of color handles.
†† = Current shorting poles can span up to 5 positions, and can have any combination of color handles (ex: C1-C7-C5-C2-A4).

2 ECO EM2007-1099	The information contained in this document has to be kept strictly confidential. Any unauthorized use, reproduction, distribution or disclosure to third parties is strictly forbidden. ABB reserves all rights regarding Intellectual Property Rights.	DFT/DATE: M.Uriguen 4/3/2008	ABB	
	SOFTWARE TYPE: AUTOCAD 2006	CHKR/DATE: M.Uriguen 4/3/2008		
	ENG. REF: MFG DWG: FT14-4074 GEN DWG: 1619C94	APPR/DATE: Tim Masters 4/3/2008		
	TITLE: FT-14 SWITCH POLE ARRANGEMENT & INT SCH		SIZE: A	DWG. NO: 94A4074
	© Copyright 2008 ABB All rights reserved		SCALE: NONE	REV: 2
ABB Protective Relays and Switches, Coral Springs FL, U.S.A.		SHEET 1 OF 1		